



HAPDCO Herbals

Pvt. Ltd.

Committed to Quality Products

SCIENCE OF HERBS





LAXOSOFT



Safe & Natural Laxative Powder

- Provides effective relief from constipation
- Corrects irregular bowel function
- Ensures the proper functioning of the digestive system
- Reduces the cholesterol level in the blood
- Non-habit forming formulation

Composition :

Each g contains :

Isabgol Husk	(Plantago ovata)	Seeds	42%
Sanay	(Cassia angustifolia)	Leaf	12%
Amla	(Emblica officinalis)	Fruit	6%
Bahera	(Terminalia bellirica)	Fruit	6%
Harad	(Terminalia chebula)	Fruit	6%
Sonth	(Zingiber officinale)	Rhizome	6%
Mulethi	(Glycyrrhiza glabra)	Stem	6%
Saunf	(Foeniculum vulgare)	Fruit	2%
Excipients			Q.S

Safe Adjuvant to Cardiac & Diabetic Treatment

Prescribe for **Versatile Benefits**



Also Available
Sugar Free
Laxosoft SF



FIB

Delicious
Orange flavour

Natural Laxative & Dietary Fibre FIBROSOL

Enriched with OAT



Reduces
Cholesterol

100% Natural

Non habit forming

No side effects

Relieves gas & acidity

Irregular bowel functions

Effective in constipation

Non habit forming laxative

Tremendous approach in post operative care, soft evacuation & expulsion of gases

Composition :
Each 100g contains :

Isabgol Husk (Plantago isphagula) Husk	60.0 %
Meetha Soda (Sod.Bicarbonate) Powder	15.0 %
Sat Nimbu (Citric Acid) Crystals	10.0%
Jai (Oat) (Avena sp.) Powder	10.0%
Excipient	Q.S.

Also available
Fibrosol-SF
Natural Laxative

Sugar Free
Diabetic
Friendly

A natural healer not just for constipation

but for multiple health benefits

Aqui Plus®

For Acne & Pimple Prone skin...

AQU

*Redefining skin care
.... in a herbal way*

- Very effective against Acne (Pimples) and Blackheads
- Clear blemishes & works effectively against pruritus
- Unclogs pores & prevents future breakouts
- Reduces the proliferation of bacteria, inflammation and spots
- Efficacious in pitting and scarring formed on the face
- Refines and tightens skin pores & gives younger and healthy looking skin

- Acne, pimples, skin eruptions
- Blackheads
- Pitting & Scarring
- Dry and dull skin

AQUI PLUS CREAM



Composition:

Each 10 gm contains:

Neem Ext.	(Azadirachta indica)	Leaves	40mg
Haldi Ext.	(Curcuma longa)	Tuber	40mg
Daruhaldi Ext.	(Berberis species)	Stem	30mg
Gheekuanr Ext.	(Aloe vera)	Pulp	20mg
Tulsi Ext.	(Ocimum sanctum)	Leaves	20mg
Durva Ext.	(Cynodon dactylon)	Leaves	20mg
Mandukparni Ext.	(Hydrocotyle asiatica)	Leaves	15mg
Base & Preservative			Q.S

AQUI PLUS FACEWASH

Composition:

Each 10 ml contains:

Neem Ext.	(Azadirachta indica)	Leaves	25mg
Haldi Ext.	(Curcuma longa)	Tuber	25mg
Rosmerry Ext.	(Rosmarinus officinalis)	Flower	25mg
Gheekuanr Ext.	(Aloe vera)	Pulp	30mg
Daruhaldi Ext.	(Berberis species)	Stem	20mg
Tea Tree Oil		Oil	5mg
Base & Preservative			Q.S



Removes Pimples . Enhance Confidence

A revolutionary treatment for
Spots & Marks on skin

MARKS GO

Anti Marks Cream/Facewash

Because Nature Knows, How Marks Go

- ✘ Lightens and eventually erases the acne and pimple marks
- ✘ Reduces stretch marks, scars and burn marks
- ✘ Rejuvenates the skin from within and provides extra glow
- ✘ Serves effectively in getting rid of under eye dark circles
- ✘ Improves skin texture and provides smooth & clear skin

- Melasma • Dark spots • Furuncles • Age spots • Burn marks



MARKS GO CREAM

Composition:

Each 100g contains :

Ghritkumari Aq. Ext. (Aloe vera)	Leaves Pulp	0.50%
Ashwagandha Ext. (Withania somnifera)	Roots	0.50%
Shatawari Ext. (Asparagus racemosus)	Roots	0.50%
Cucumber Aq. Ext. (Cucumis sativus)	Fruits Pulp	0.20%
Narangi Aq. Ext. (Citrus reticulata)	Fruits Peel	0.20%
Mulethi Aq. Ext. (Glycyrrhiza glabra)	Root	0.20%
Neem Aq. Ext. (Azadirachta indica)	Leaves	0.15%
Chiraita Aq. Ext. (Swertia chirata)	Panchang	0.15%
Giloy Aq. Ext. (Tinospora cordifolia)	Stem	0.50%
Haladi (Curcuma longa)	Rhizome	0.10%
Base & Preservative	Q.S	



MARKS GO FACEWASH

Composition:

Each ml contains :

Chandan Ext. (Santalum album)	Wood	10mg
Haridra Ext. (Curcuma longa)	Rhizome	5mg
Aloe vera Ext. (Aloe barbadensis)	Pulp	50mg
Neem Ext. (Azadirachta indica)	Leaf	50mg
Mainsil Ext.	Powder	15mg
Base & Preservative	Q.S.	



One stop solution to get rid of **Spots & Marks** on skin



If you suffer **chapped** skin & **cracked lips**
Every Season protect yourself with...

CALENDULA PLUS CREAM

Calendula Plus

Antiseptic cream with **Aloe vera**



- ✦ Contains powerful antiseptic ingredients in a gentle formulation to assist in the treatment of 'minor' wounds by fighting infection & helping to prevent re-infection.
- ✦ Treats cuts, scratches, abrasions, insect bites, minor burns, sunburns, sore lips, minor skin infections, chapped roughened hands & cracked itchy skin
- ✦ Multi-purpose cream for cuts, burns, wounds, rashes and minor skin infections
- ✦ **Aloevera & Calendula Facewash** Cleanses, Moisturise and Nourishes the skin and makes it Soft, Fresh & Radiant
- ✦ Whisks away Microorganism and Dust off the Skin & Rejuvenate & Soothes the skin



Dry & Rough Skin



After Shave



Cracked Lips



Minor Cuts & Burns



Makes Skin Smooth

Composition :

Each 10g. contains :

Neem Ext.	(Azadirachta indica)	Leaves	40mg
Gheekuanr Ext.	(Aloe vera)	Pulp	40mg
Durva Ext.	(Cynodon dactylon)	Leaves	20mg
Mandukparni Ext.	(Hydrocotyle asiatica)	Leaves	20mg
Jasad bhasma	(Zinc Oxide)	Powder	250mg
Calendula Ext.	(Calendula officinalis)	Flower	20mg
Base & Preservative			Q.S

ALOEVERA & CALENDULA FACEWASH

Composition:

Each ml contains:

Aloe barbadensis (Aloe vera Ext.)	Pulp Ext.	15 mg
Azadirachta indica (Neem Ext.)	Leaf Ext.	10 mg
Curcuma longa (Haldi Ext.)	Rhizome Ext.	10 mg
Rosmarinus officinalis (Rosemary Ext.)	Leaf Ext.	5 mg
Santalum album (Chandan Ext.)	Wood Ext.	5 mg
Calendula officinalis (Calendula Ext.)	Flower Ext.	10 mg
Excipients		q.s.



Makes Skin Soft & Smooth





To Heal Cracked **Heels** & **Hands Naturally**

NOKRACK

Cream

Soothes, Smoothen & Soften The Cracked Skin

- ✘ Acts as an anti-inflammatory & soothes feet gently
- ✘ Acts as an excellent moisturizer to hydrate dry skin
- ✘ Stimulates local circulation to keep feet warm
- ✘ Heals cracks and relieves inflammed skins conditions
- ✘ Instant relief in circulatory defect due to cold exposure

- Cracked skin ● Chapped hands ● Fissures
- Chilblains ● Hyperkeratosis



Composition :

Each 10g contains :

Gheekuanr Ext.	(Aloe vera)	Pulp	20mg
Neem Ext.	(Azadirachta indica)	Leaves	20mg
Daruhaldi Ext.	(Berberis species)	Stem	20mg
Calendula Ext.	(Calendula officinalis)	Flower	20mg
Kapoor	(Camphora)	Crystals	15mg
Wheat germ Oil	(Triticum Sativum)	Oil	100mg
Durva Ext.	(Cynodon dactylon)	Leaves	15mg
Base & Preservative			Q.S

Say **NO** to **KRACKED** Heels & hands



Fluoride Free dental cream with Neem, Babul, Pilu

Incredible oral care

Clodent *Neem* Dental Cream

Offers Complete **Dental Care** & **Oral Hygiene**

- Promotes healthy gums, teeth & fresh breath
- Relieves occasional pain due to tooth/gum abscess
- Prevents occasional bleeding of gums
- Provides soothing effect on sensitive gums

Instant Relief in :

- Dental caries
- Dental plaque
- Inflammation & bleeding
- Tooth discoloration
- Gingivitis
- Halitosis
- Pyria



Composition :

Each 100 gm contains :

Pilu	(Salvadora persica)	Bark	0.500gm
Durgandh khair	(Acacia farnesiana)	Bark	0.600gm
Kattha	(Acacia catechu)	Stem	0.800gm
Moulsiri	(Mimusops elengi)	Bark	0.400gm
Anar Ext.	(Punica granatum)	Fruit Ext.	0.257gm
Tumburoo Ext.	(Zanthoxylum acanthopodium)	Fruit Ext.	0.180gm
Babool Ext.	(Acacia arabica)	Bark Ext.	0.171gm
Triphala Ext.	—	Fruit Ext.	0.171gm
Vayvidang Ext.	(Embelia ribes)	Fruit Ext.	0.171gm
Nirgundi Ext.	(Vitex nugundo)	Seeds Ext.	0.114gm
Neem Powder	(Azadirachta indica)	Leaves Powder	0.144gm
Ajmoda Powder	(Apium graveolens)	Root Powder	0.100gm
Vaikranta Bhashma		Powder	0.200gm



A Natural Protection For Teeth & Gums & maintains Oral Hygiene

Latest Formula For **Ultra Fast Relief** from **PAIN**

Relaxomuv

Provides relief **Beyond belief** *Gel / Balm*



- ❖ Relaxes stiffness of joints
- ❖ Alleviates muscle strains & sprain
- ❖ Improves inflammatory conditions
- ❖ Provides relief in arthritis & rheumatism



- Painful shoulder
- Sports injuries
- Low back pain
- Cervical spondylitis
- Sprain, strain & dislocation
- Sciatica

COMPOSITION:

Each 10 g Contains:-

Gandhapuro Tail	(Gaultheria fragrantissima)	Tail	10%
Peppermint	(Mentha piperata)	Crystal	5%
Linseed Oil	(Linum usitatissimum)	Oil	4%
Tarpin Tail	(Pinus longifolia)	Tail	2%
Nilgiri Tail	(Eucalyptus glabulus)	Tail	2%
Kapoor	(Camphora)	Crystals	3%
Base & Preservative			Q.S

COMPOSITION:

Each 10 g Contains:-

Peppermint	(Mentha piperata)	Crystal	15%
Kapoor	(Camphora)	Crystals	10%
Gandhapuro Tail	(Gaultheria fragrantissima)	Tail	8%
Nilgiri Tail	(Eucalyptus glabulus)	Tail	2%
Chah Tail	(Cymbopogon citratus)	Tail	8%
Ganjani Tail	(Cymbopogon winterianus)	Tail	3%
Base & Preservative			Q.S



Just move with full confidence

For Effective & Immediate **PAIN** Relief

Reumacon Oil



Composition :

Each ml contains :

Gandhapura Tail	(Gaultheria fragrantissima)	Tail	40%
Kapoor	(Camphora)	Crystals	20%
Peppermint Satva	(Mentha species)	Crystals	13%
Nilgiri Tail	(Eucalyptus globulus)	Tail	13%
Tarpin Tail	(Pinus longifolia)	Tail	13.5%
Butylated Hydroxyl Toluene			0.5%

Instant relief from pain of nerves, muscles & bones

- ◆ Helps in relieving pain
- ◆ Strengthens the skeletal & the neuro-muscular system
- ◆ Provides Easy movement of joints & muscles
- ◆ Helps in removing stiffness & improves mobility of limbs



Composition :

Each capsule contains :

Mahayograj guggul		Powder	100mg
Guggul Ext.	(Balsamodendron mukul)	Exude Ext.	100mg
Shallaki	(Boswellia serrata)	Gum Resin	100mg
Ashvagandha Ext.	(Withania somnifera)	Root Ext.	60mg
Harsingar Ext.	(Nyctanthes arbor-tristic)	Leaf Ext.	60mg
Sonth Ext.	(Zingiber officinale)	Rhizome Ext.	80mg
Haldi Ext.	(Curcuma longa)	Rhizome Ext.	80mg
Excipients			Q.S

- Acute & chronic muscular pain
- Gout
- Rheumatoid arthritis
- Osteoarthritis
- Lumbago
- Sciatica
- Spondylitis
- Sprain
- Filaria
- Paralysis
- Frozen Shoulder
- Stiffness of neck

A Natural, Safe & Better Alternative to NSAIDs

Modern eating habits
 have negative impact on liver...
Reverse the Damage to liver

Basiliv

A Natural Liver Healer



- ❖ Protects liver against various hepatotoxins
- ❖ Promotes appetite
- ❖ Helpful in pain, burning or swelling in the region of liver
- ❖ Useful in conditions like jaundice, nausea & vomiting
- ❖ Corrects hyperaemia of liver
- ❖ Helpful in cirrhosis of liver
- ❖ Reduces tenderness of abdominal wall

- Fatty liver disease
- Amoebic dysentery
- Infective hepatitis
- Liver abscess
- Hepatomegaly
- Drug induced liver damage



COMPOSITION :
 Each 5-ml contains :

Kalmegh	(Andrographis paniculata)	Whole Plant	10mg
Kutki	(Picrorhiza kurroa)	Rhizome	10mg
Makoi	(Solanum nigrum)	Fruit	25mg
Methi	(Trigonella Foenumgraecum)	Seeds	25mg
Ajwain	(Carum copticum)	Seeds	25mg
Saunf	(Foeniculum vulgare)	Seeds	25mg
Punarnava	(Boerhaavia diffusa)	Root	30mg
Sanay	(Cassia angustifolia)	Leaves	10mg
Alubukhara	(Prunus cummunis)	Fruit	25mg
Himsra	(Capparis spinosa)	Root	10mg
Papita	(Carica papaya)	Fruit	75mg
Kharbuja	(Cucumis melo)	Seeds	25mg
Bhui amla	(Phyllanthus niruri)	Whole plant	25mg
Nilifer	(Nymphaea stellata)	Flower	25mg
Kasni	(Cichorium intybus)	Seeds	30mg
Biranjasiif	(Achillea millefolium)	Flowers	25mg
			Q.S

Flavoured Syrup Base

Basiliv
TABLETS

Composition : Each tablet contains :

Kutki D. Ext.	(Picrorhiza kurroa)	Stem D.Ext.	150 mg
Kalmegh D. Ext.	(Andrographis paniculata)	W.Plant D.Ext.	100 mg
Bhui Amla D. Ext.	(Phyllanthus niruri)	W.Plant D.Ext.	50 mg
Makoy D. Ext.	(Solanum nigrum)	Fruit D.Ext.	50 mg
Arjuna D. Ext.	(Terminalia arjuna)	Bark D.Ext.	50 mg
Giloy D. Ext.	(Tinospora cordifolia)	Stem D.Ext.	50 mg
Amalaki D. Ext.	(Embelica officinalis)	Fruit D.Ext.	50 mg
Chitrakmool D. Ext.	(Plumbago zeylanica)	Mool D.Ext.	50 mg
Harad D. Ext.	(Terminalia chebula)	Fruit D. Ext.	20 mg
			q.s.



Basiliv Syrup
Tablets

Hepato Protective • Hepato Promotive

RENASIN

Capsule / Syrup

Renal stones and Urinary tract infections

RENASIN

SYRUP

Composition :

Each 5 ml contains :

Varun	(Crataeva nurvala)	Bark	50mg
Pashanbheda	(Saxifraga ligulata)	Root	50mg
Gokharu	(Tribulus terrestris)	Fruit	50mg
Punarnava	(Boerhaavia diffusa)	Root	50mg
Bhui amla	(Phyllanthus niruri)	W.P.	50mg
Kulthi	(Dolichos biflorus)	Seeds	50mg
Triphala		Fruits	25mg
Kakari	(Cucumis utilissimus)	Seeds	15mg
Kheera	(Cucumis sativus)	Seeds	15mg
Kankol Mirch	(Piper cubeba)	Fruit	12.5mg
Hazarulyahud		Bhasma	10mg
Swet Parpati			20mg
Mooli Kshar		kshaar	15mg
Shilajit			5mg
Flavoured Syrup Base			Q.S.



- ◆ Acts as a diuretic
- ◆ Helps flush out small stones from the kidneys
- ◆ Decreases the extra uric acid from blood
- ◆ Maintain pH of the urine
- ◆ Checks repeated urinary infections
- ◆ Prevents formation of kidney stones
- ◆ Soothe the Inflamed mucosa and alleviate the burning sensation or pain that occurs during urination

No risk of electrolyte imbalance
Protects kidney from nephrotoxic effects

- Painful & burning micturition • Renal colic • Hyperuricemia
- Prevents recurrent UTI • Prevents recurrence of stone after surgery

RENASIN

Capsule

Composition :

Each capsule contains :

Pashan Bhed Ext.	(Saxifraga ligulata)	Root	200mg
Kulthi Ext.	(Dolichos biflorus)	Seeds	100mg
Barun Ext.	(Crataeva nurvala)	Bark	100mg
Gokharu Ext.	(Tribulus terrestris)	Fruit	75mg
Giloy Ext.	(Tinospora cordifolia)	Stem	50 mg
Hajrulyahud Bhasma		Powder	50mg
Javakhar Namak	(Potasii carbonas)	Powder	60mg
Excipients			Q.S.



**Fights infections, Reduces inflammation,
Treats various skin diseases**

Saffodin

Natural BLOOD Purifier

Syrup/Capsule

Removes Blood Impurities from Blood

**Prevents infections & reduces inflammation
Improves blood flow thus giving the skin a natural glow**

- Anti-bacterial, anti-fungal, Anti-viral & Anti-septic properties
- Anti-oxidant property prevents damages to body or skin cells
- Strengthens immune system and improves overall health
- Reduces pain, irritation and discomfort caused by skin infections
- Prevents recurrence of acne & pimples on the skin

- Abscess & boils
- Acne & pimples
- Blackheads
- Inflammation
- Furuncles
- Carbuncle



Composition :

Each 5ml Contains

Anantmool	(Hemidesmus indicus)	Root	210mg
Punarnava	(Boerhaavia diffusa)	Root	150mg
Haldi	(Curcuma longa)	Tuber	40mg
Amalaki	(Emblica officinalis)	Fruit	20mg
Bahera	(Terminalia bellerica)	Fruit	20mg
Harad	(Terminalia Chebula)	Fruit	20mg
Sarphonka	(Tephrosia purpurea)	Panchang	30mg
Kalmegh	(Andrographis paniculata)	Whole Plant	50mg
Gheekuanr	(Aloe vera)	Leaves	60mg
Neem	(Azadirachta indica)	Leaves	70mg
Giloy	(Tinospora cordifolia)	Root	90mg
Gulab	(Rosa centifolia)	Bud	50mg
Bhringraj	(Eclipta alba)	Panchang	30mg
Flavoured Syrup Base			Q.S.



Composition :

Each Capsule Contains

Haldi Ext.	(Curcuma longa)	Rhizome	90mg
Amaltas Ext.	(Cassia fistula)	Leaves	90 mg
Laosun Ext.	(Allium sativum)	Bulb	30mg
Neem Ext.	(Azadirachta indica)	Leaves	45mg
Giloy Ext.	(Tinospora cordifolia)	Stem	45mg
Vayvidang Ext.	(Embelia ribes)	Fruit	45mg
Bhringraj Ext.	(Eclipta alba)	Whole Plant	45mg
Triphala Ext.		Fruit	45mg
Kalmegh Ext.	(Andrographis paniculata)	Whole Plant	45mg
Gandhak Rasayan		Powder	15mg
Excipients			Q.S



Regulates **menstrual** flow and **Restores** her glow



UTROSOL

Uterine Syrup

- ✦ Regulates & restores normal menstrual flow
- ✦ Relieves back-ache & abdominal pain
- ✦ Reduces irritation, improves strength and stamina
- ✦ Ensures active & energetic life throughout the month

- Dysfunctional uterine bleeding ● Menstrual irregularities
- Unexplained female infertility ● Leucorrhoeal discharge
- Menorrhagia, Dysmenorrhoea or Oligomenorrhoea

Non Hormonal Menstrual Regulator

Composition :

Each 5 ml contains :

Ashoka	(Saraca indica)	Bark	100 mg
Barre	(Carthamus tintorius)	Seeds	30 mg
Majitha	(Rubia cordifolia)	Root	20 mg
Karpas	(Gossypium herbaceum)	Seeds	20 mg
Lodh	(Symplacos racemosa)	Bark	30 mg
Gajar	(Daucus carota)	Seeds	20 mg
Makoy	(Solanum nigrum)	Fruit	20 mg
Anantmool	(Hemidesmus indicus)	Root	25 mg
Saunf	(Foeniculum vulgare)	Seeds	20 mg
Sugandhbala	(Pavonia odorata)	Rhizome	20 mg
Abhal	(Juniperus communis)	Fruit	30 mg
Kharbuja	(Cucumis melo)	Seeds	20 mg
Annisune	(Pimpinela anisum)	Seeds	20 mg
Udumber	(Ficus glomerata)	Bark	30 mg
Gokharu	(Tribulus terrestris)	Fruit	20 mg
Sanay	(Cassia angustifolia)	Leaves	20 mg
Kasni	(Cichorium intybus)	Seeds	20 mg
Syrup base			q.s.

When The **Cough** Gets Rough

Vascof

Cough Syrup



Acts Tough On The Cough

- ❖ Provides protective and soothing effect
- ❖ Promotes secretion of respiratory demulcent
- ❖ Protects the irritated mucus membrane
- ❖ Liquify thick mucus & facilitates its expectoration
- ❖ Checks allergy and congestion

COMPOSITION :

Each 5 ml contains :

Adusa	(Adhatoda vasica)	Leaves	250mg
Mulethi	(Glycyrrhiza glabra)	Root	230mg
Tulsi	(Ocimum sanctum)	Leaves	200mg
Kali Mirich	(Piper nigrum)	Fruit	10mg
Adrakh	(Zingiber officinale)	Rhizome	150mg
Lavang	(Caryophyllus aromaticus)	Bud	15mg
Lahsun	(Allium sativum)	Bulb	50mg
Menthol	(Mentha species)	Crystals	100mg
Navsadar	(Ammonium chloride)	Powder	40mg
Flavour Syrup Base			Q.S.



- Productive cough
- Persistent cough
- Cough with respiratory tract infection
- Smokers cough

Improves Pulmonary Functions

Too busy, too tired & diverted
from **sexual** life?

Vigomin

SYRUP
CAPSULE

Restores **mood**, Elevates **desire**, maximize **performance**

- ❖ Rejuvenates stamina, vigour & vitality
 - ❖ Powerful sex stimulant, which promotes sexual health
 - ❖ Restores liver function & improves appetite
 - ❖ Helps calm the mind to restore confidence
 - ❖ Provides strength & improves performance
 - ❖ Provides relief from stress & improves quality of Life
- Poor libido
 - Sexual weakness
 - Anorexia
 - General debility
 - Convalescence
 - Premature ejaculation

Time Tested and Ever Trusted



Vigomin CAPSULE

Composition :

Each capsule contains :

Ashvagandha Ext.	(Withania somnifera)	Root Ext.	80mg
Kounch Ext.	(Mucuna pruriens)	Seeds Ext.	120mg
Satavari Ext.	(Asparagus racemosus)	Root Ext.	60mg
Gokharu Ext.	(Tribulus terrestris)	Fruit Ext.	60mg
Jayaphal Ext.	(Myristica fragrans)	Fruit Ext.	60mg
Safed Musli Ext.	(Asparagus adscendens)	Root Ext.	40mg
Shuddha Shilajeet Ext.		Exude Powder	30mg
Akarakarabha Ext.	(Anacyclus pyrethrum)	Root Ext.	40mg
Pipli Ext.	(Piper longum)	Fruit Ext.	40mg
Utangan Ext.	(Blepharis edulis)	Seed Ext.	20mg
Excipients			Q.S



Vigomin Syrup

Composition :

Each 5 ml Contains :

Gokharu	(Tribulus terrestris)	Fruit	50mg
Safed Musli	(Chlorophytum)	Root	50mg
Ashvagandha	(Withania somnifera)	Root	130mg
Satavari	(Asparagus racemosus)	Root	125mg
Vidarikand	(Pueraria tuberosa)	Tuber	120mg
Jayaphal	(Myristica fragrans)	Fruit	100mg
Majitha	(Rubia cordifolia)	Root	100mg
Makoy	(Solanum nigrum)	Fruit	50mg
Giloy	(Tinospora cordifolia)	Stem	150 mg
Bidhara	(Argyreia speciosa)	Root	100mg
Akarakarabha	(Anacyclus pyrethrum)	Root	150mg
Rasna	(Pluchea lanceolata)	Leaves	10mg
Kali Mirich	(Piper nigrum)	Fruit	3mg
Sonth	(Zingiber officinale)	Rhizome	30mg
Pipal	(Piper longum)	Fruit	4mg
Triphala		Fruit	10mg
Flavoured Syrup Base			Q.S.

Replenish the tear film & relieves **dryness** of eyes

Britone Eye Drops

A Natural Eye Healer

- **Gulab** Protects from dust, pollutants, redness, inflammation of eye from harmful ingredients of make up & beauty products
- **Harad :** Good for itching, redness, and watering of eyes
- **Amla** Useful in eye disorders like cataract and glaucoma
- **Haldi** Protects eyes from the damages done by the free radicals, such as cataract, macular degeneration, glaucoma, vision defects, ophthalmia etc.
- **Tulsi** Useful in eye care like conjunctivitis, boils etc, which are caused due to viral, bacterial or fungal infection. It also soothes eyes and reduces stress

Britone ...A Drop of **Comfort** Adds Life to Eyes

Our Eyes are our windows to the world



COMPOSITION : Each 5 ml contains :

Aqueous distillate of

Gulab	(Rosa centifolia)	Flower	500 mg	Pudina	(Mentha viridis)	Leaves	2.0 mg
Harad	(Terminalia chebula)	Fruit	200 mg	Phenyl Ethyl Alcohol		Liquid	0.50%w/v
Bahera	(Terminalia bellerica)	Fruit	200 mg				
Amla	(Emblica officinalis)	Fruit	200 mg				
Haldi	(Curcuma longa)	Rhizome	50 mg				
Tulsi	(Ocimum sanctum)	Leaves	50 mg				
Punarnava	(Boerhaavia diffusa)	Root	200 mg				

- Red eyes
- Tired eyes
- Dry eyes
- Watery eyes
- Strain, glare
- Pollution & allergies
- Computer vision syndrome



Herbal Lubricating Eye Drops

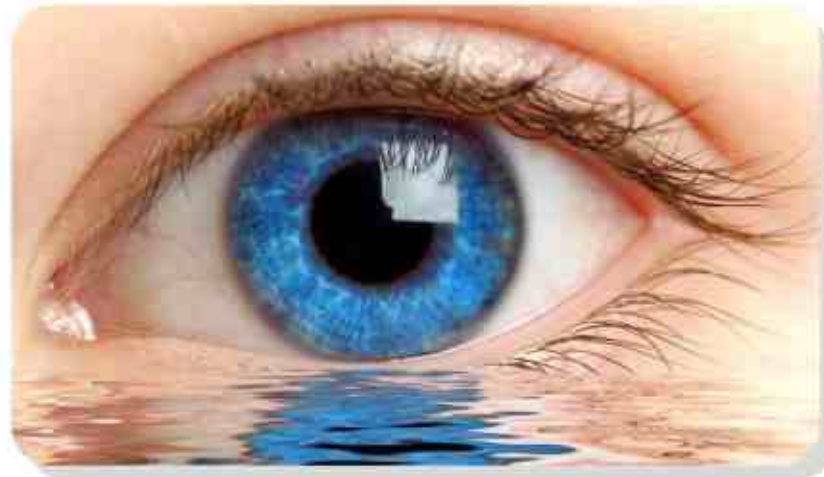
Herbilube

Eye Drops

Relieves dryness of eyes

- ◆ Keep the eye moist, help to relieve symptoms of dry eyes such as burning , itching etc.
- ◆ Eye inflammations, allergies & conjunctivitis
- ◆ Itching, redness and watering of eyes
- ◆ Computer vision syndrome/dryness of eyes
- ◆ Stress and fatigue after long hours of work

- **Gulab :** Great anti-bacterial and anti-septic properties
 - Protects eyes from dust, pollutants & harmful ingredients of makeup
 - Reduces stress and fatigue after sitting for long hours in front of computer/T.V.
 - Washes extra dirt present in the eyes & helps them to relax
 - Great remedy for reducing dark circles
- **Harad :** Good for itching, redness, and watering of eyes
- **Amla :** Rich in vitamin C, known to control infections
 - Strengthens the eye muscles, keeps eyes healthy and vision intact
 - Powerfully inhibits the free radicals, which are one of the sources of cataract.
- **Tulsi :** Anti viral, anti bacterial & anti fungal properties
 - Helps to cure eye infections like conjunctivitis
 - Protects eyes from all the damages done by the free radicals, such as cataract, macular degeneration, glaucoma, etc.
- **Glycerin :** Soothes, cool and relax the eyes in a gentle manner



Composition :

Each 5 ml contains :

Gulab (Rosa centifolia)	Flower	600 mg
Harad (Terminalia chebula)	Fruits	200 mg
Bahera (Terminalia belerica)	Fruits	200 mg
Amla (Embelica officinalis)	Fruits	200 mg
Tulsi (Ocimum sanctum)	Leaves	100 mg
Glycerin	Liquid	250 mg
Carboxymethyle Cellulose Sodium	Powder	25.0 mg
Phenyl Mercuric Nitrate	Powder	0.001% w/v



For better control over **Ear Infections**

OPTANIN

Ear Drops



A Broad spectrum anti-fungal, Anti bacterial & Anti Pruritic

- ✦ Acts as an anti-inflammatory with local anaesthetic action
- ✦ Relieves eustachian catarrh due to common cold / tonsillitis
- ✦ A safe remedy for puss & pain inside the ears

- ◆ Mixed Ear infection
- ◆ Whizzing & throbbing
- ◆ Watery purulent discharge
- ◆ Allergy & inflammation of ear
- ◆ Acute and chronic otitis media
- ◆ Discharge of fetid pus from the ears

COMPOSITION :

Each 5 ml contains :

Tulsi	(Ocimum sanctum)	Leaves	100mg
Latjira	(Achyranthes aspera)	Root	100mg
Harjod	(Cissus quadrangularis)	Kand	100mg
Genda	(Tagetes erecta)	Leaves	100mg
Base & Preservative			Q.S.



IMPECCABLE EARS. PLEASANT WORLD



Effective In:

Leucorrhoea

PID

Foul odour

Irregular menstruation

Bacterial vaginosis

Vulvo-vaginal candidiasis

Trichomoniasis

Restores the pH of vagina
and to stop **LEUCORRHOEA**

Leucosol

Capsule

- ❖ Has stimulatory action on endometrial wall
- ❖ Astringent action on mucus membrane of genital tract.
- ❖ Controls leucorrhoea & maintains normal vaginal pH
- ❖ Provide anti-inflammatory, Antifungal & antispasmodic effect and reduces the risk of PIDS
- ❖ Re-strengthens the reproductive tissues thus restores their vitality
- ❖ Best treatment for light yellow and white discharge and remove odour of Vagina

Composition :

Each capsule contains :

Ashoka Ext. (Saraca indica)	Bark Ext.	100mg
Lodh Ext. (Symlocos racemosa)	Bark Ext.	100mg
Gular Ext. (Ficus glomerata)	Bark Ext.	100mg
Pradantak Louh	Powder	100mg
Shuddha Shilajeet	Exude Ext.	40mg
Vang Bhasma	Powder	60mg
Kukkutandvak Bhasma	Powder	60mg
Excipients		Q.S



Enhances **Health** & Promotes **Regular Menses**

Chronic Anal Fissures

cause severe, sharp anal pain during evacuation...

Haphroid Capsule



A unique treatment of Hemorrhoids of various etiology & Burning sensation

- ❁ Prevents innate bleeding & related congestion
- ❁ Shrinks the pile mass and fissures
- ❁ Provides calcium to thicken blood
- ❁ Induces laxation, thus helps to get rid of constipative habit
- ❁ Prevents anorectal itching, burning and inflammation

- **Bleeding Piles** ● **Congenital Piles**
- **Heamorrhoids & Acquired piles**

Composition :

Each capsule contains :

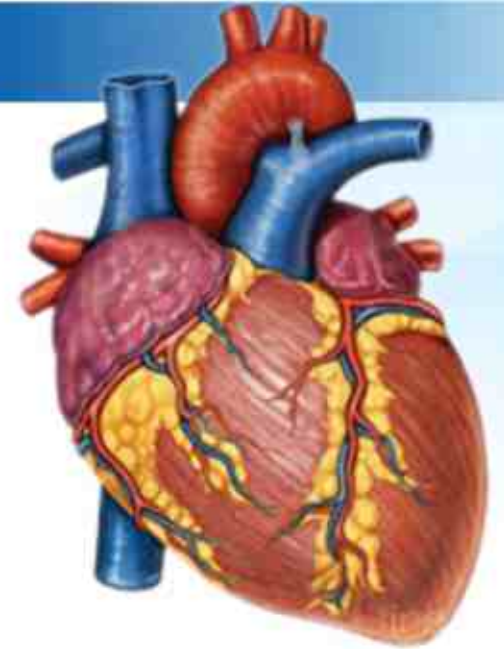
Daruhaldi Ext.	(Berberis species)	Stem Ext.	100mg
Suran Ext.	(Amorphophallus campanulatus)	Tuber Ext.	100mg
Harad Ext.	(Terminalia Chebula)	Fruit Ext.	100mg
Neem Ext.	(Azadirachta indica)	Leaf Ext.	60mg
Neem Oil	(Azadirachta indica)	Oil	10mg
Arshkuthar Ras		Powder	60mg
Kaharwa Pishti		Powder	60mg
Arshoghni Vati		Powder	60mg
Excipients			Q.S



Haphroid Capsule Shrinks anal fissures and relieves pain

IN HYPERTENSION & ANGINA

HYPER B.P. Capsule



In mild to moderate hypertensive conditions

- ❖ Supports healthy cholesterol and lipid levels
- ❖ Helps strengthen myocardium, promotes normal cardio-vascular functions
- ❖ Maintains normal blood pressure
- ❖ Promotes proper blood flow
- ❖ Helps protect heart
- ❖ Promotes healthy Prostaglandin levels
- High cholesterol (LDL) & triglycerides level
- Hypertension • Angina Pectoris

HYPER B.P. Capsule

Composition :

Each capsule contains :

Arjuna Ext.	(Terminalia arjuna)	Bark Ext.	100mg
Brahmi Ext.	(Bacopa moninieri)	Panchang Ext.	100mg
Sarp Gandha Ext.	(Rauwolfia serpentina)	Root Ext.	80mg
Tagar Ext.	(Valeriana wallichii)	Rhizome ext.	50mg
Laahsun Ext.	(Allium sativum)	Bulb ext.	50mg
Khurasani Ajvain Ext.	(Hyoscyamus niger)	Seeds Ext.	40mg
Jatamansi Ext.	(Nardostachys jatamansi)	Rhizome Ext.	40mg
Bael Ext.	(Aegle marmelos)	Root Ext.	40mg
Excipients			Q.S

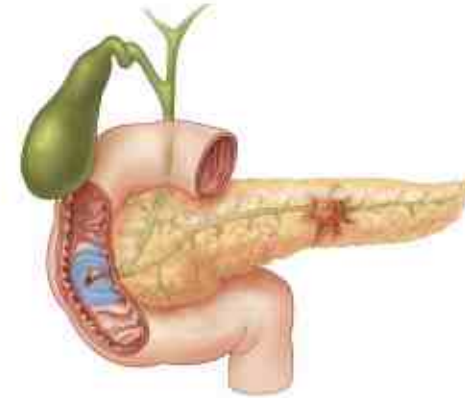


HYPER B.P. Capsule

The One to Start with & Stay with ...

Regulates blood sugar levels **naturally....**

TRETOL Capsule



- ✠ An adjuvant to insulin-dependent diabetes mellitus therapy
 - ✠ Reduces fasting and post-prandial blood glucose levels
 - ✠ Reduces serum cholesterol, low-density lipoprotein
 - ✠ Increases serum high-density lipoprotein levels
 - ✠ Enhances the peripheral utilization of glucose
-
- Non-insulin-dependent diabetes mellitus
 - Reduces hyperglycemia
 - For NIDDM with microalbuminuria/retinopathy/hyperlipidemia



Composition :

Each capsule contains :

Bari Jamun Ext.	(Eugenia jambolana)	Seeds Ext.	100mg
Karela Ext.	(Momordica charantia)	Seeds Ext.	100mg
Gudmar Ext.	(Gymnema sylvestre)	Leaves Ext.	60mg
Methi Ext.	(Trigonella foenumgraecum)	Seeds Ext.	60mg
Vijaysar Ext.	(Pterocarpus marsupium)	Stem Ext.	60mg
Giloy Ext.	(Tinospora cordifolia)	Stem Ext.	40mg
Haldi Ext.	(Curcuma longa)	Rhizome Ext.	40mg
Amalaki Ext.	(Embolica officinalis)	Fruit Ext.	40mg
ShuddhaShilajeet Ext.		Exude Powder	30 mg
Sadabahr Ext.		Powder	60mg
Excipients			Q.S

The Beacon of Hope For **Diabetics**

Increases calcium absorption & nourishes bones...
...in a **Natural** way

Calsol

Capsule/Tablets



MOST EFFECTIVE IN CALCIUM DEFICIENCY

- ✦ Provides natural sources of Calcium, eliminating the risk of abnormally high calcium & Vitamin D levels in blood
- ✦ Helps support bone metabolism & maintain bone density
- ✦ Helps to slow bone loss & reduce the incidence of fractures
- ✦ Preserve existing bone mineral mass & protein matrix

- Calcium deficiency
- Post menopausal syndrome
- Hypocalcemia
- Pregnancy & lactation
- Osteoporosis
- Osteodystrophy

Natural Calcium
for Strong & Healthy bones



Composition :
Each capsule contains :

Ashvagandha Ext. (Withania somnifera)	Root Ext.	120mg
Sahijna Ext. (Moringa pterygosperma)	Root Ext.	80mg
Hadjor Ext. (Cissus quadrangularis)	W. P.Ext.	100mg
Kukkutandtvak Bhasma	Powder	60mg
Shankha Bhasma	Powder	80mg
Louh Bhasma	Powder	60mg
Kapardak Bhasma	Powder	80mg
Prawal Bhasma	Powder	40mg
Excipients		Q.S



Composition :
Each Tablet contains :

Harjor D.Ext. (Cissus quadrangularis)	W.Plant	50mg
Shahijana D.Ext. (Moringa pterigosperma)	Root	50mg
Satavari D. Ext. (Asparagus racemosus)	Root	50mg
Guggul D. Ext. (Balsamodendron mukul)	Exude	100mg
Giloy D. Ext. (Tinospora cordifolia)	Stem	50mg
Arjuna D. Ext. (Terminalia arjuna)	Bark	50mg
Kukkutandtvak Bhasma	Powder	70mg
Godanti Bhasma	Powder	50mg
Shankh Bhasma	Powder	150mg
Prawal Bhasma	Powder	50mg
Excipients		Q.S.



Environmental **Pollution** & **lifestyle**...

Can effect our Immunity Adversely

IMMUSOL

Capsule

- ◆ Supports the body defence mechanism and promotes immunity
- ◆ Helps in ornamental efficiency of protective WBCs
- ◆ Helps in optimization of the immunity modulating mechanism of body
- ◆ Helps to contract with contemporary allergens
- ◆ Used by all ages as a final health promoting product
- ◆ Improves defence against sinusitis, tonsillitis and other septic conditions

- Low immunity
- Poor Health
- Recurring infections
- Convalescence
- Viral/Bacterial Infections
- Recurring Cough, Cold & Flu



IMMUSOL

Capsule

Composition :

Each capsule contains :

Ashvagandha Ext.	(Withania somnifera)	Root Ext.	80mg
Satavari Ext.	(Asparagus racemosus)	Root Ext.	40mg
Giloy Ext.	(Tinospora cordifolia)	Stem Ext.	100mg
Sonth Ext.	(Zingiber officinale)	Rhizome Ext.	80mg
Lasun Ext.	(Allium sativum)	Bulb Ext.	80mg
Haldi Ext.	(Cucuma longa)	Rhizome Ext.	50mg
Suddha ShilajeetExt.		Excude Ext.	50mg
Kalmegh	(Andrographis paniculata)	W.P. Ext.	60mg
Excipients			Q.S



A SOLUTION TO BOOST IMMUNE SYSTEM

Forget all discomforting
menopausal syndrome with...

MENOFIT Capsule



A Natural Option to Treat Menopausal Syndrome, PMDD

- ◆ Treats & cures muscular cramps
 - ◆ Helps to alleviate menopausal symptoms
 - ◆ Stops abnormal or excessive bleeding
 - ◆ Regulates & restores normal menstrual flow
 - ◆ Can be taken even during periods & Safe for long term use
- Hot flushes
 - Vaginal dryness
 - Leucorrhoea
 - Mood swing
 - Insomnia

MENOFIT Capsule

Composition :

Each capsule contains :

Ashoka Ext.	(Saraca indica)	Bark Ext.	100mg
Gular Ext.	(Ficus glomerata)	Bark Ext.	100mg
Satavari Ext.	(Asparagus racemosus)	Root Ext.	80mg
Nagar Motha Ext.	(Cyperus rotundus)	Root Ext.	60mg
Lodh Ext.	(Symlocos racemosa)	Bark Ext.	50 mg
Giloy Ext.	(Tinospora cordifolia)	W. P. Ext.	50 mg
Pradantak Louh		Powder	50mg
Kukkutandtvak Bhasma		Powder	50mg
Louh Bhasma		Powder	30mg
Excipients			Q.S

HELPS HER GLOW AGAIN



**Reduces the Stress,
Improves Brain Performance**

Ginsenco

Ginseng enriched powerful Capsule

- Helps to enhance strength and boost up immunity
- In females, helps in healthy menstruation
- Stimulates male sexual function, helps in production of healthy semen
- Supports immune system & slows down ageing process of the body
- Soothing effect on the digestive tract & corrects peristalsis
- A significant source of antioxidants & improves resistance to stress
- Stimulates brain cells thereby improves concentration, grasping & memory



Composition :
Each capsule contains :

Ginseng Ext.	(Aralia pseudoginseng)	Root Ext.	80mg
Kaunch Ext.	(Mucuna pruriens)	Seeds Ext.	80mg
Ashvagandha Ext.	(Withania somnifera)	Root Ext.	60mg
Satavari Ext.	(Asparagus racemosus)	Root Ext.	60mg
Utangan Ext.	(Blepharis edulis)	Seed Ext.	60mg
Gokharu Ext.	(Tribulus terrestris)	Fruit Ext.	60mg
Amalaki Ext.	(Emblica officinalis)	Fruit Ext.	40mg
Jayaphal Ext.	(Myristica fragrans)	Fruit Ext.	40mg
Safed Musli Ext.	(Asparagus adscendens)	Root Ext.	40mg
Shuddha Shilajeet Ext.		Exude Powder	40mg
Excipients			Q.S

A HEALTH Maintenance Formula